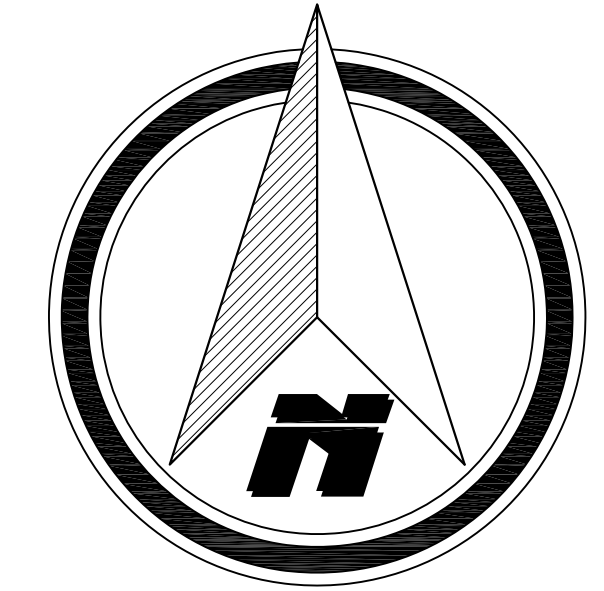
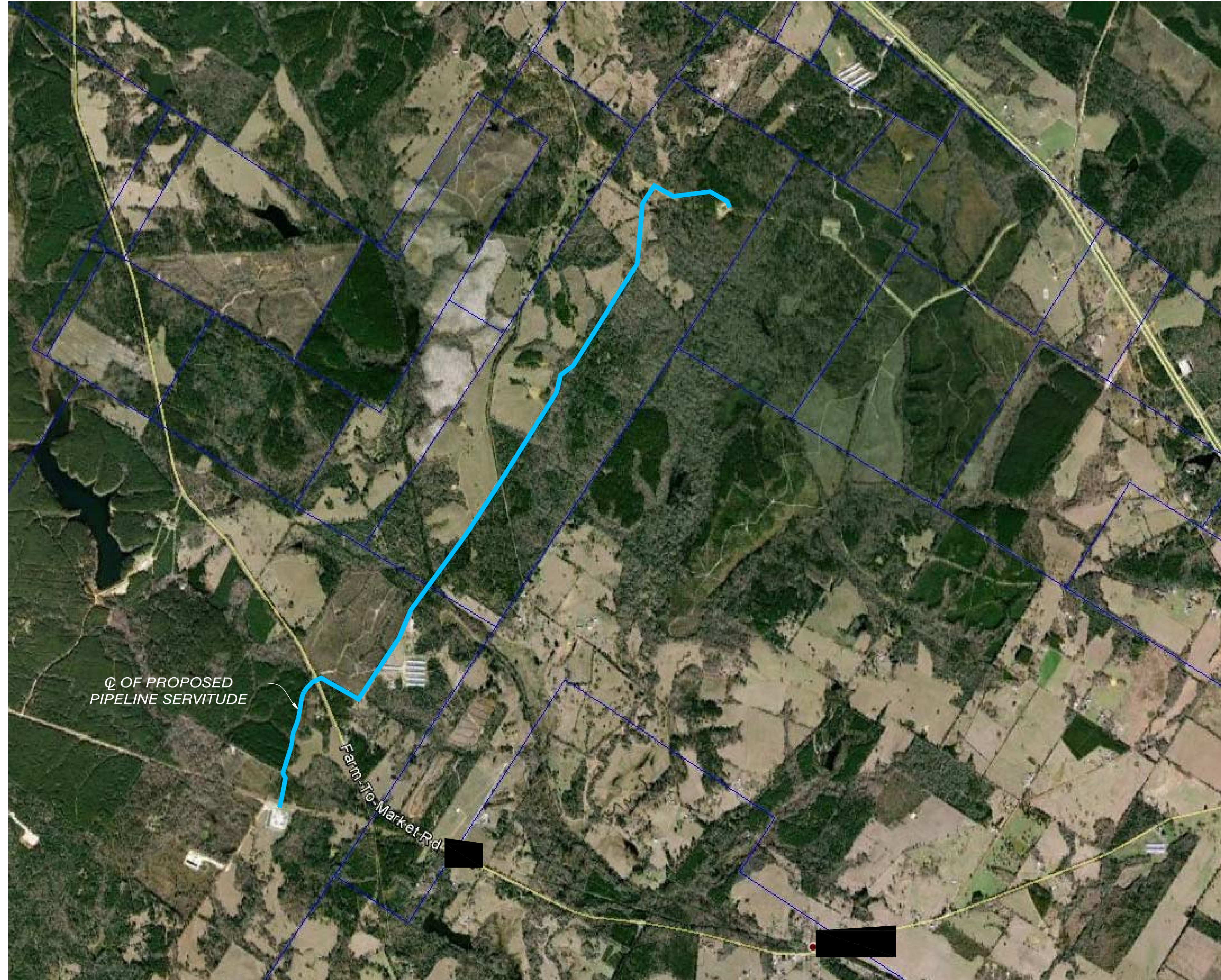




**6" PROPOSED PIPELINE ALIGNMENT SURVEY  
WELL CONNECT  
AFE #  
SURVEY A-, & SURVEY A-  
COUNTY, TEXAS  
STA: 0+00 TO 186+58**



COORDINATE SYSTEM  
NAD 1983 FEET TX CENTRAL



CONTROL POINTS				
POINT NO.	NORTHING	EASTING	ELEVATION	DESCRIPTION
38			266.3	60D NAIL
39			266.0	60D NAIL
40			336.6	60D NAIL
41			350.0	60D NAIL
42			338.5	60D NAIL
43			342.7	60D NAIL
44			322.6	60D NAIL
45			350.2	60D NAIL
46			347.6	60D NAIL
47			311.4	60D NAIL
107			336.7	IRF
122			347.2	60D NAIL
209			348.2	60D NAIL
224			347.3	60D NAIL
228			351.9	60D NAIL
230			346.8	60D NAIL
233			322.3	60D NAIL
236			329.9	60D NAIL
239			324.2	60D NAIL
241			308.1	60D NAIL
246			255.4	60D NAIL
272			261.4	60D NAIL
278			310.7	60D NAIL
283			309.7	60D NAIL
295			309.7	60D NAIL
300			332.8	60D NAIL
318			315.1	60D NAIL
324			281.5	60D NAIL
374			316.1	60D NAIL
401			325.9	60D NAIL
403			344.6	60D NAIL
404			340.9	60D NAIL
405			351.2	60D NAIL
407			335.8	60D NAIL
410			340.2	60D NAIL
429			250.7	60D NAIL
430			252.3	60D NAIL
456			254.0	60D NAIL
471			257.9	60D NAIL
476			342.5	60D NAIL
477			337.7	60D NAIL
478			252.4	60D NAIL
480			265.9	60D NAIL
481			266.3	60D NAIL
483			303.5	60D NAIL
493			301.7	60D NAIL
700			336.7	60D NAIL
1008			335.8	60D NAIL
1013			310.7	60D NAIL
1017			307.9	60D NAIL
1020			305.6	60D NAIL
1024			307.7	60D NAIL
1032			309.7	60D NAIL
1077			334.4	60D NAIL
1090			356.6	60D NAIL
1096			356.5	60D NAIL
10000			329.3	60D NAIL

CENTERLINE PIS					
POINT NO.	NORTHING	EASTING	LATITUDE	LONGITUDE	DESCRIPTION
1					POB
2					PI
3					PI
4					PI
5					PI
6					PI
7					PI
8					PI
9					PI
10					PI
11					PI
12					PI
13					PI
14					PI
15					PI
16					PI
17					PI
18					PI
19					PI
20					PI
21					PI
22					PI
23					PI
24					PI
25					PI
26					PI
27					PI
28					PI
29					PI
30					PI
31					PI
32					PI
33					PI
34					PI
35					PI
36					PI
37					PI
38					PI
39					PI
40					PI
41					PI
42					EOS

COMPANY  
LOGO

**RMC**  
**SURVEYING**  
13621 HWY. 110 S.  
TYLER, TX. 75703  
(903) 939-8860  
FIRM ID 10122800

COMPANY  
LOGO